

A large, close-up image of the American flag, showing the stars and stripes in detail, positioned on the left side of the advertisement.

AMERICAN PREMIUM



AMERICA'S CHOICE
www.amgdf.com

STRONG & QUIET



Short Panel Shown with
S-405 Optional Windows

DOUBLE WIDE/SHORT PANELS



S-405



S-306



S-499



S-397



S-399



S-300



S-393



S-100



S-595



S-398

DOUBLE WIDE/LONG PANELS



L-405



L-306



L-499



L-397



L-399



L-398



L-393



L-100



L-595



L-305



OPTIONAL WINDOWS

STANDARD FEATURES

- STANDARD NON-INSULATED FORMULA 124 GALVANIZED STEEL 2" THICK
- OUR FORMULA 124 STEEL IS THICKER AND STRONGER THAN OTHER COMPANIES 25GA STANDARD STEEL
 - TONGUE AND GROOVE JOINT SYSTEM
 - WOODGRAIN TEXTURE STEEL
- 2 COAT BAKED ON POLYESTER PAINT SYSTEM
- HEAVY DUTY U STYLE BOTTOM WEATHER SEAL

OPTIONAL FEATURES

- WINDOWS AND GLASS CHOICES
- SUPER POLY-BACK INSULATION
 - OUTSIDE T HANDLE LOCK
- WEATHER SEAL FOR TOP & SIDES OF DOOR
- ELECTRIC GARAGE DOOR OPENER



SHORT RAISED PANEL



LONG RAISED PANEL



SHOWN: CARRIAGE HOUSE SHORT PANEL WHITE WITH OPTIONAL BLACK LC-399-B WINDOWS



CARRIAGE HOUSE SHORT PANEL WHITE WITH OPTIONAL WR-105-LC-BLACK FRAMES & INSERT DESIGN



WR-105-LC

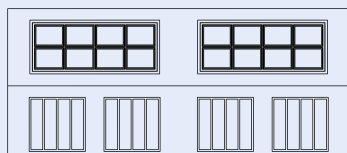


WR-109-LC

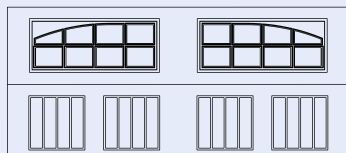
OPTIONAL WINDOWS

NOTE

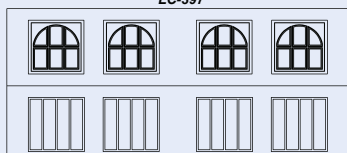
ALL DOORS SHOWN WITH
OPTIONAL HINGES AND HANDLES



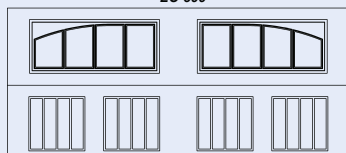
LC-397



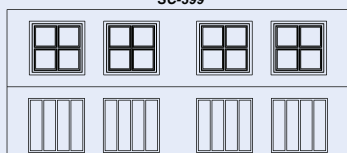
LC-599



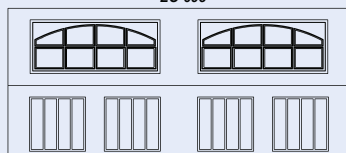
SC-399



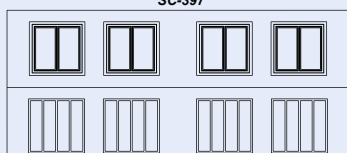
LC-695



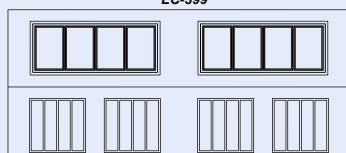
SC-397



LC-399



SC-199



LC-595



Carriage House Long shown with Light Finish
Optional WR109-LC Windows

PREMIUM DELUXE

SERIES

**INSULATED
STEEL SANDWICH**



PATENT PENDING

TRUE LOOK

A STEP ABOVE, A LOOK APART. SIDE BY SIDE COMPARISON TO STANDARD WOODGRAIN DOORS WILL SOLIDIFY OUR POINT. IT JUST LOOKS BETTER! MORE AUTHENTIC, MORE DETAIL THAN ANY OTHER STEEL DOOR. IT'S SO UNIQUE AND ONE OF A KIND!
TRUE LOOK DOORS ARE PATENT PENDING



SHOWN: CARRIAGE LONG PANEL, GRAPHITE COLOR



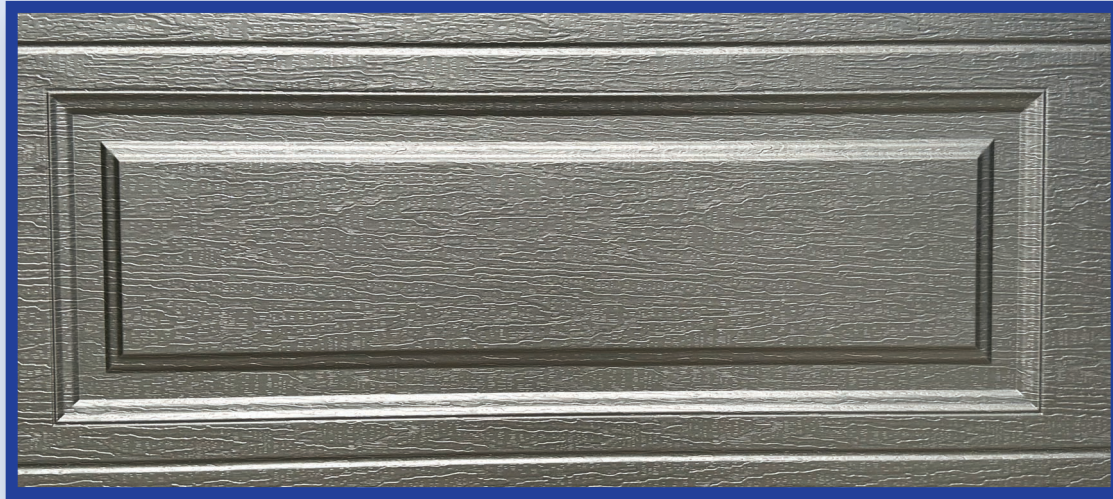
SHOWN: BLACK FLUSH



CLOSE UP SHOWS THE DETAIL THAT IS ONE OF A KIND!

9X8 DOOR SIZE SHOWN FOUR 24" SECTIONS

NOTHING BEATS A **TRUE LOOK**



LONG PANEL WITH GRAPHITE COLOR SHOWN

**CLEAN INSIDE APPEARANCE PROVIDES A FINISHED LOOK.
IT'S LIKE AN INSULATED ROLLING WALL**



CALCULATED ENERGY VALUE OF 10



FLUSH PANEL



SHORT PANEL



CARRIAGE LONG PANEL



CARRIAGE
SHORT PANEL

STANDARD FEATURES

- TRUE LOOK AUTHENTIC WOOD LOOKING FRONT OF DOOR
- 2" THICK SANDWICH STEEL INSULATED CONSTRUCTION
 - HOT DIPPED GALVANIZED STEEL
 - 2 COAT BAKED ON POLYESTER PAINT SYSTEM
 - FORMULA 124/125 STEEL FACE CONSTRUCTION
 - FORMULA 125/126 STEEL BACK CONSTRUCTION
- TIME TESTED RIGID CFC FREE POLYSTYRENE BOARD CONSTRUCTION
- INSIDE OF DOOR WOODGRAIN WHITE TEXTURED STEEL
- FOR A CLEAN LOOK AND FINISH
- HEAVY DUTY U STYLE BOTTOM WEATHER SEAL

Limited Lifetime Warranty

OPTIONAL FEATURES

- WINDOWS AND GLASS CHOICES
- CARRIAGE STYLE HINGES, HANDLES, KNOCKERS
- WEATHER SEAL/MOULDING FOR TOP, SIDES OF DOOR FRAME

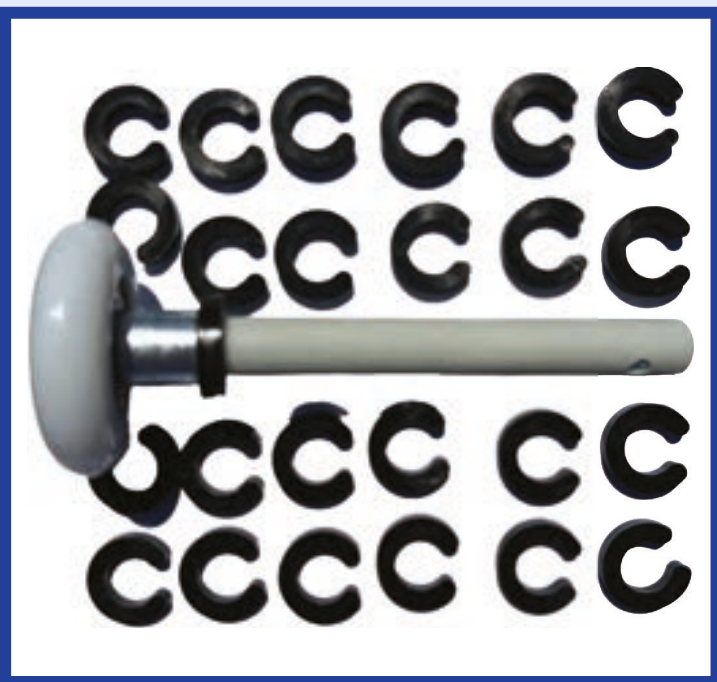
GENUINE PREMIUM GARAGE DOOR HARDWARE

JUST ONE MORE REASON AMERICAN PREMIUM GARAGE DOOR IS AMERICA'S CHOICE. HARDWARE, HINGES & ROLLERS THAT ARE SECOND TO NONE.

JUST LIKE A GREAT LOOKING CAR OR TRUCK IT MAY LOOK GOOD, BUT WHAT IF IT DOES NOT RUN GOOD? IT'S THE PARTS INSIDE THAT MAKE THE DIFFERENCE.

PATENTED QUIET HINGES AND ROLLERS. STRONGER, LARGER AND BETTER DESIGNED HARDWARE. ALL ADD UP TO SMOOTHER, QUIETER, LESS MAINTENANCE AND LONGER LIFE!

PERFECT SPACE ROLLER SPACERS ALLOW FINE TUNING OF THE DOOR SITTING IN ITS TRACKS. PREVENTS SHIFTING OF DOORS SIDE TO SIDE MOVEMENT. SPACERS ELIMINATE SCRAPING, GRINDING, RUBBING NOISES. INSURES QUIET OPERATION, FORWARD THINKING AND AN EXCLUSIVE PRODUCT YOU WILL ONLY FIND IN OUR DOOR HARDWARE KIT!



ROLLER SPACERS SHOWN ON BOTTOM ROLLER SHAFT INSURE DOOR STOPS IN THE SAME PLACE. NO SHIFTING. NO TRACK GRINDING. PREVENTS RUB LINE ON FACE OF DOOR CAUSED BY SHIFTING SIDE TO SIDE.

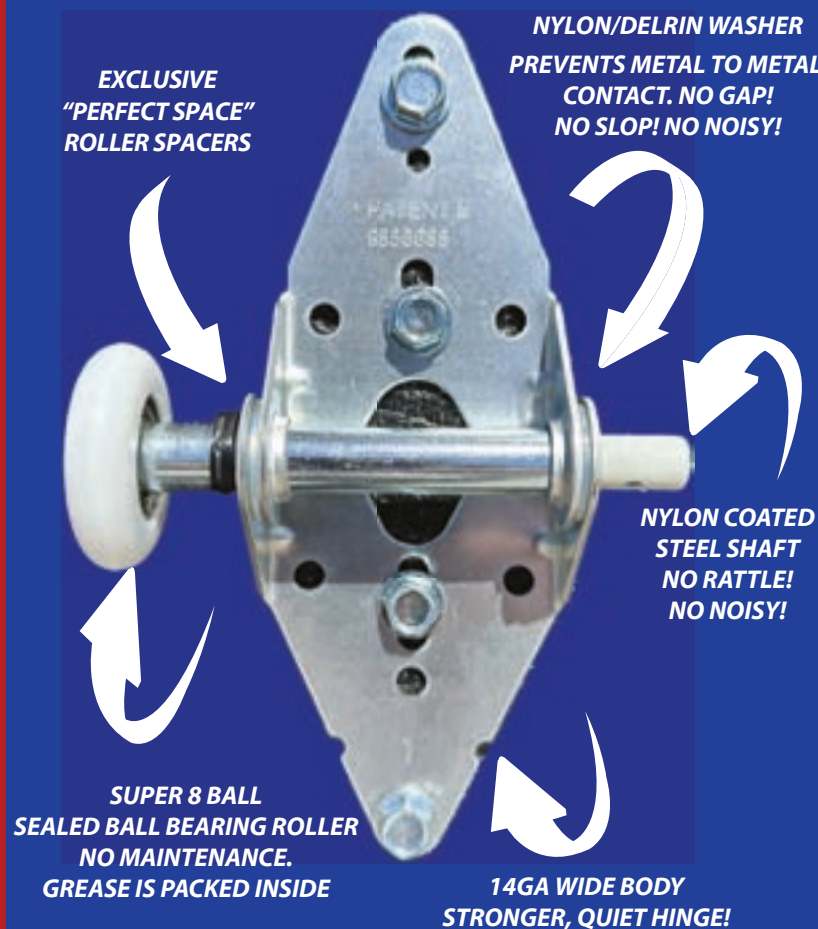
ALL DOORS INCLUDE



• PATENTED HINGE PATENT #9856685
• PATENTED/PATENT PENDING
#10,280,668/667 SUPER QUIET ROLLER



GOVERNMENT OF CANADA PATENTS: 2978901, 2978933
PATENTS PENDING: 3027986, 2978898



THERE IS A DIFFERENCE!

Hinge

Us: larger, stronger, super quiet design



OTHERS US

Bearing Plate

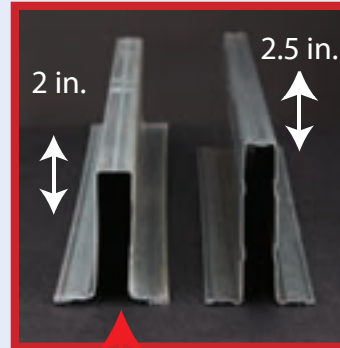
Us: larger/stronger design



OTHERS US

Strut/Top Panel Reinforcement

Us: larger/stronger ribbed design



OTHERS US



U.S. PATENT # 9353538

Top Bracket

Us: larger/stronger design



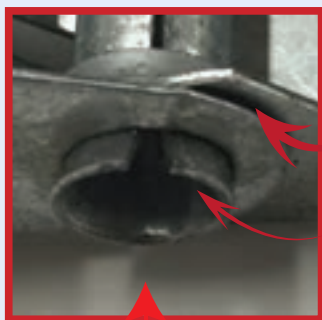
OTHERS US

Bottom Bracket

Us: safer/stronger design



OTHERS US



OTHERS

Gap
Sharp Edges



No Gap!
No Noise!
US

Wide Body Hinge
14 GA. steel with large barrel
is bigger and stronger.

OTHER BRANDS/ INFERIOR HINGES



OTHERS

THIN 18 GA
BUILDERS TYPE HINGE
WITH GAPS THAT MAKE NOISE.
NO BEARING. HARD PLASTIC
ROLLER AND UNCOATED STEEL
SHAFT THAT MAKES IT NOISY.

OTHERS

UPGRADED HINGE WITH
GAPS CAUSE NOISE.
UNSEALED BALL
BEARINGS.
UNCOATED STEEL SHAFT THAT
MAKES IT NOISY.

OTHERS

SKINNY PLASTIC
HINGE LACKS THE
STRENGTH OF STEEL.
UNCOATED SHAFT.



SHOWN: WHITE COLOR, WHITE LAMINATED GLASS

MODERN LINE DESIGN A

NOTE: PLEASE CHECK WITH YOUR DOOR DEALER FIRST. SOME MODELS OR COLORS MAY NOT BE AVAILABLE IN SOME STATES/MARKETS.



SHOWN: BROWN COLOR DARK SMOKED GLASS

MODERN SIDE



DESIGNED
ENGINEERED
ASSEMBLED



AVAILABLE COLORS

Colors Available for all models.
Please check with your
Dealer before ordering.



Please ask your dealer
for actual color chip
sample before ordering.
Colors printed in
catalog may vary
from actual color of door.



WHITE	ALMOND	GRAPHITE	COOL BLACK SPECIAL HEAT REFLECTIVE PAINT
BROWN	SANDSTONE	DARK FINISH	LIGHT FINISH

**READ PAINTING INSTRUCTIONS
BEFORE PAINTING ANY DOOR!**



SHOWN: BROWN COLOR, WHITE LAMINATED GLASS

MODERN VIEW

DEALER INFO: